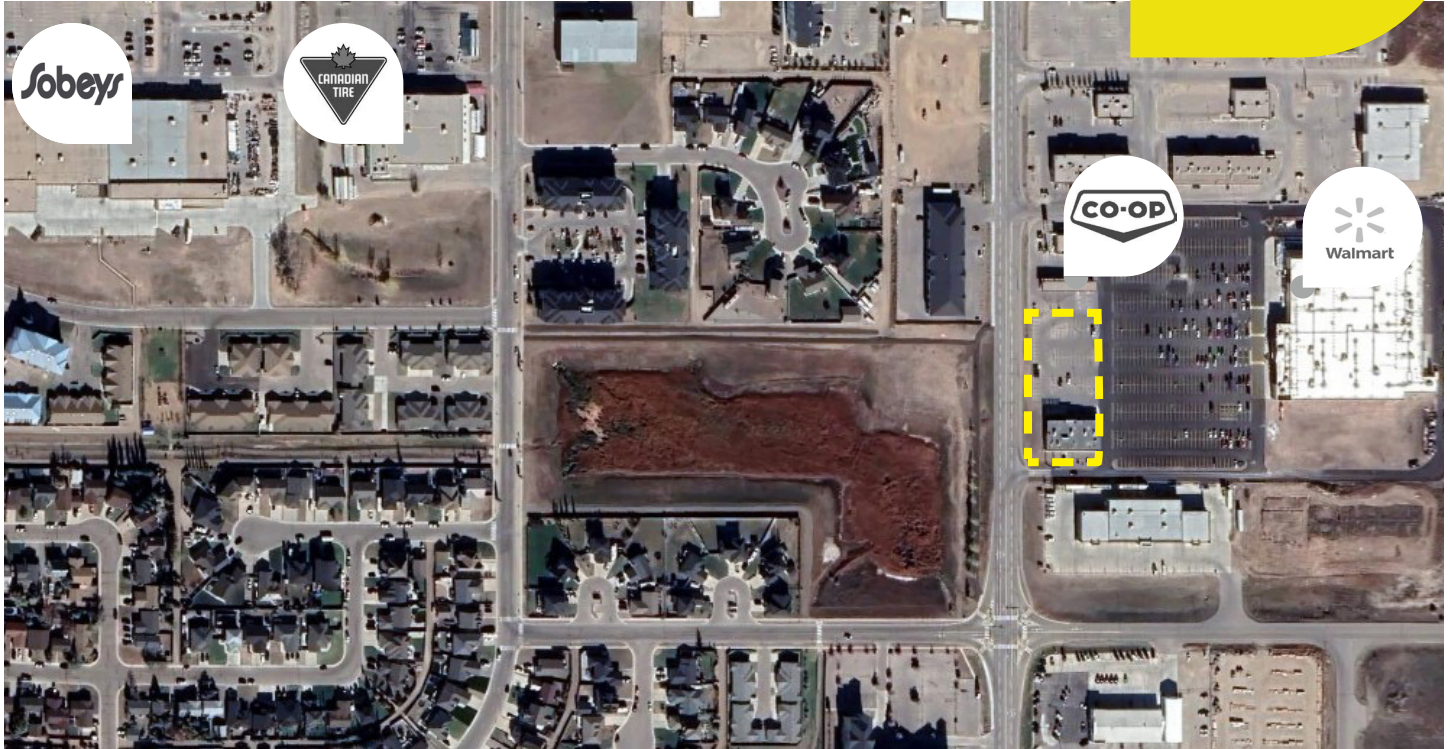


Retail For Lease

# Kensington Crossing

Fully Fixtured  
Restaurant  
Available

415 Kensington Avenue, Estevan, Saskatchewan



Population

Trade Area  
Population

11K  
50K  
148K

Average  
Household  
Income

**forum**

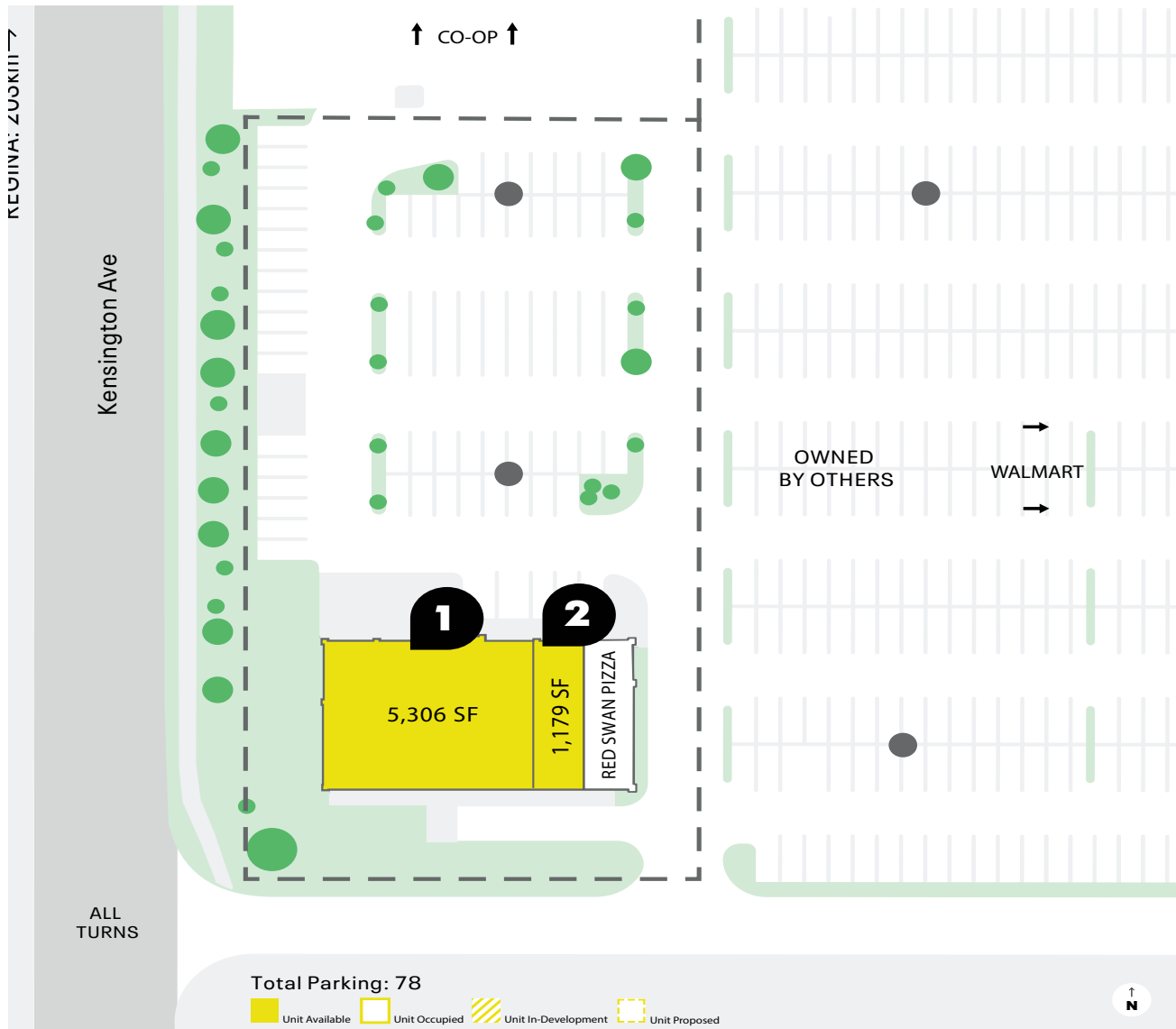
Emma Popescul  
Ph: 780-448-9157  
info@forumproperties.com



Plans and specifications are subject to change without written notice. E.&O.E.: All information furnished regarding property for sale, rental, financing or demographic information is from sources deemed reliable, but no warranty or representation is made as to the accuracy thereof and same is submitted to errors, omissions, change of price, rental or other conditions, prior sale, lease or financing or withdrawal without notice.

# Kensington Crossing

Located two hours south of Regina and 16 kilometres north of the Canada-USA border, Estevan is Saskatchewan's eighth largest city with an approximate population of 10,851 and a true secondary population of 50,000. Kensington Crossing, located along Kensington Avenue and shadow-anchored by Wal-Mart, is a 7,840-square-foot CRU home to Red Swan Pizza, with various opportunities available to lease immediately.



**forum**

Emma Popescul  
Ph: 780-448-9157  
info@forumproperties.com

Plans and specifications are subject to change without written notice. E.&O.E.: All information furnished regarding property for sale, rental, financing or demographic information is from sources deemed reliable, but no warranty or representation is made as to the accuracy thereof and same is submitted to errors, omissions, change of price, rental or other conditions, prior sale, lease or financing or withdrawal without notice.